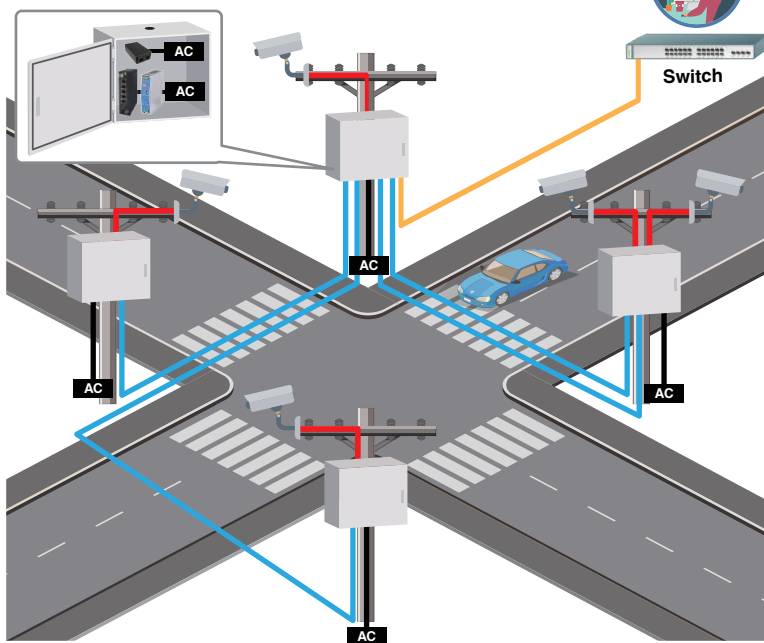


# Single PoE Ethernet Port Works with **Six** PoE Devices over Daisy-Chain Link

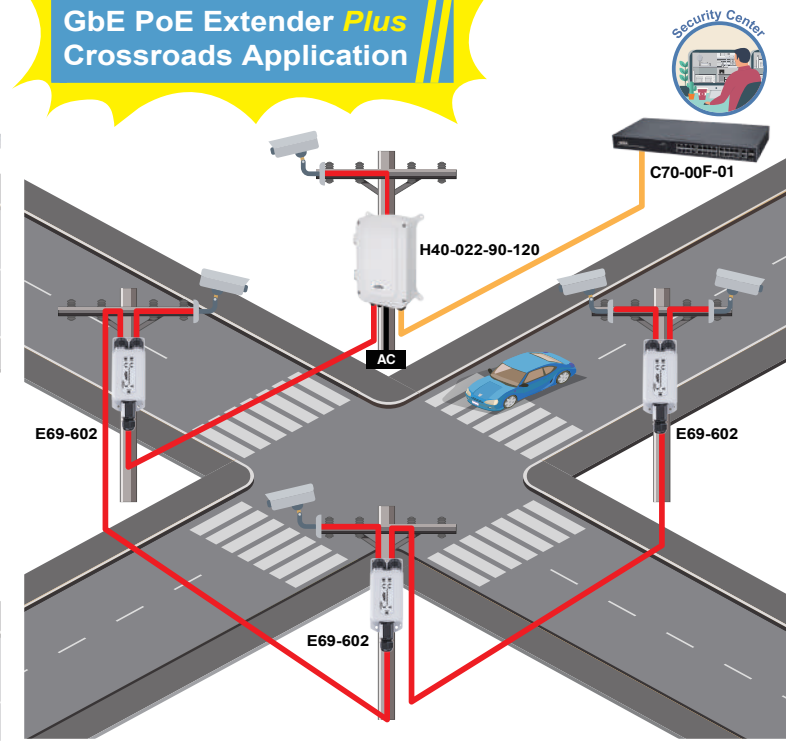
## Benefits GbE PoE Extender *plus*

- **Boost Voltage:** compensate the voltage drop as multiple GbE Extender plus be linked
- **2 output types**
  - Adjustable 24VDC: Support 24VDC Passive PoE like Ubiquiti / MikroTik / ligoWave ... Wireless APs
  - 48~57VDC: Supported PoE bt / PoH / at / af & 48VDC Passive PoE PDs
- **Built-in PoE Surge Protection / IP67 / IK10**
- **Pass through 90W bt PoE or 95W PoH PoE input**

### Traditional Crossroads Application

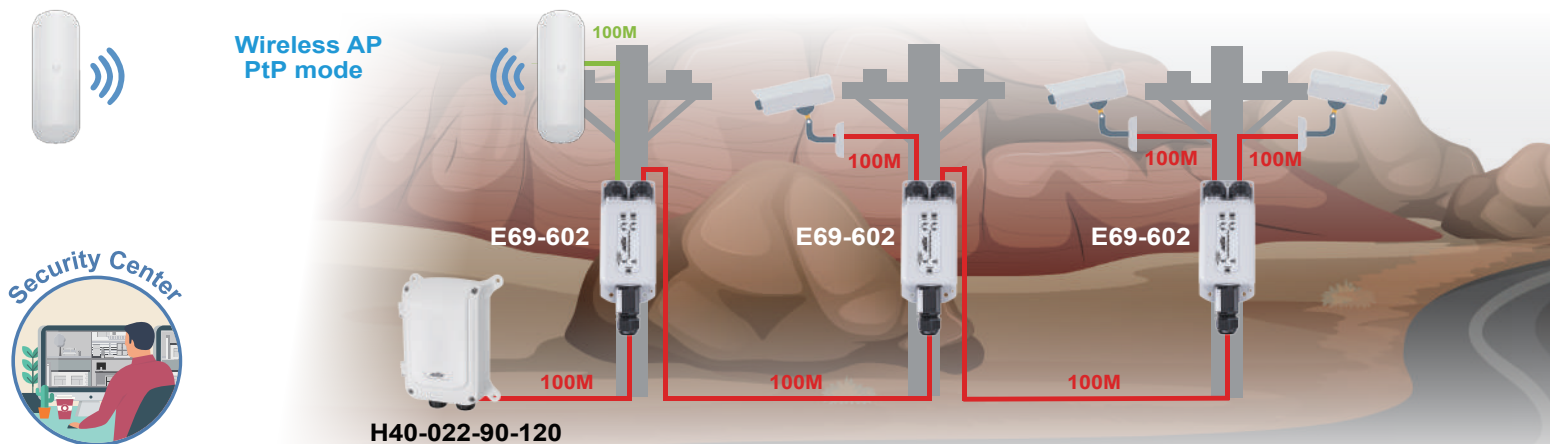


### GbE PoE Extender *Plus* Crossroads Application



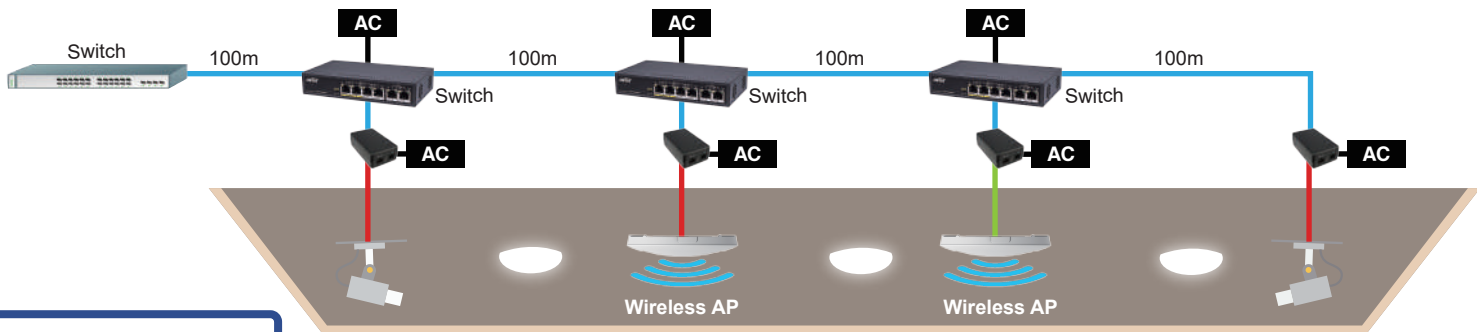
Ethernet w/PoE — Ethernet(Data) — Fiber — Power —

### Wireless Surveillance GbE PoE Extender *Plus* Application



PoE(Data + 54VDC Power) —  
 PoE(Data + 24VDC Power) —  
 Ethernet(Data) —  
 Power —

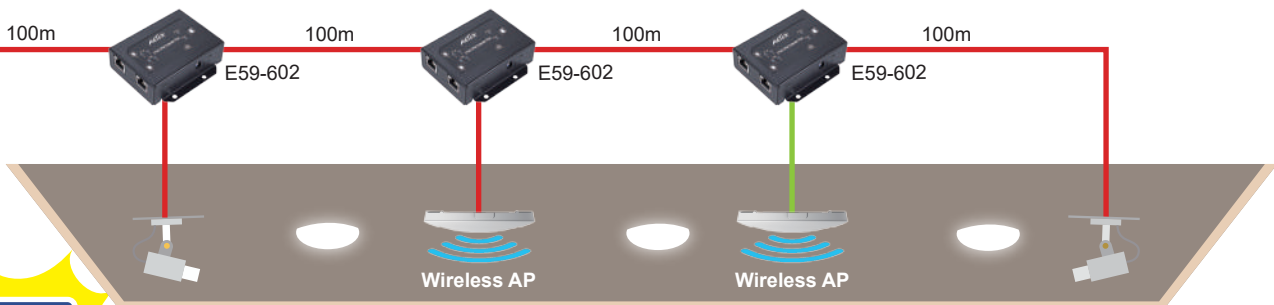
# WiFi APs & PoE IP cameras in ceiling of Hotel Corridor



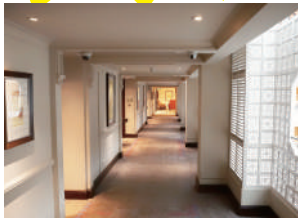
**Traditional Application**



PoE(Data + 54VDC Power) ●●●●●  
 PoE(Data + 24VDC Power) ●●●●●  
 Ethernet(Data) ●●●●●  
 Power ●●●●●

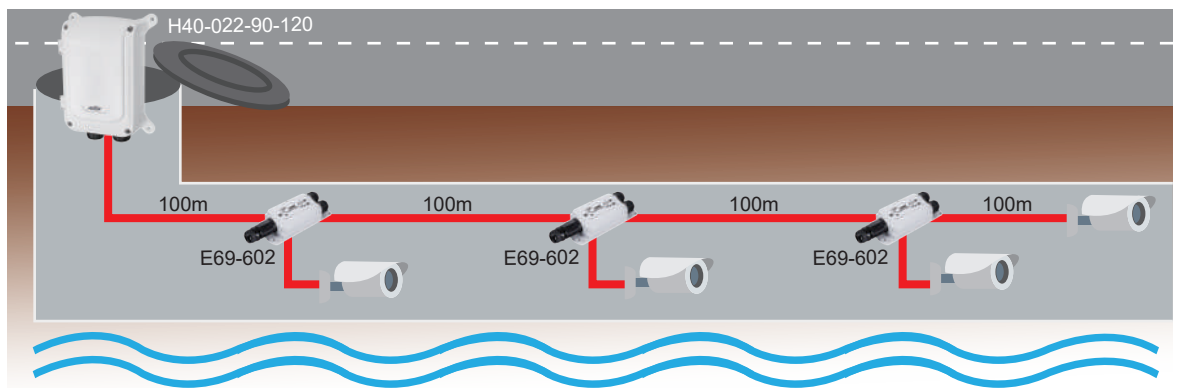


**GbE PoE Extender Plus Application**



PoE(Data + 54VDC Power) ●●●●●  
 PoE(Data + 24VDC Power) ●●●●●  
 Power ●●●●●

# Drainage System GbE PoE Extender Plus Application



GbE PoE Extender *Plus*

**E59-602**



**Features**

- Voltage Booster
- 1-port Gigabit 30W/60W/90W PoE input + 1-port Gigabit PoE (56VDC) output + 1-port Gigabit PoE (24VDC/56VDC) output
- Drives the reach beyond restricted 100m Ethernet distance

**E69-602**



**Features**

- Outdoor IP67, IK10, -40°C ~ 65°C
- Voltage Booster
- 1-port Gigabit 30W/60W/90W PoE input + 1-port Gigabit PoE (56VDC) output + 1-port Gigabit PoE (24VDC/56VDC) output
- Drives the reach beyond restricted 100m Ethernet distance

Outdoor GbE PoE Switch

**H40-022-90-120**



**Features**

- Outdoor IP67, IK10, -40°C ~ 65°C
- 2-port Gigabit 95W PoH PoE + 2-port Gigabit SFP
- 12KV PoE surge protection
- -40°C ~ 65°C operating temperature

Industrial GbE PoE Media Converter

**M30-022-90**



**Features**

- 2-port Gigabit 95W PoH PoE + 2-port Gigabit SFP
- 48~56VDC Input Power
- 12KV surge protection
- -40°C ~ 75°C operating temperature



**Download Field Test Avigilon Cameras Report**

Copyright © 2021 AETEK INC. All rights reserved.

